

STANDARD DEPARTURE
CHART - INSTRUMENT
(SID) - ICAO

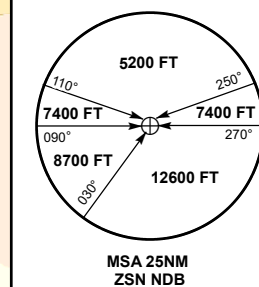
TRANSITION ALT
10000 FT

ZAISAN TOWER 118.7

LATRI 1B

ZAISAN
RWY 27

DIST IN NM
ALT, ELEV IN FT
BRG ARE MAGNETIC
VAR5°E(2017)



ALT/HEIGHT CONVERSION
QNH 2500 (QFE)
(645FT - 197m)

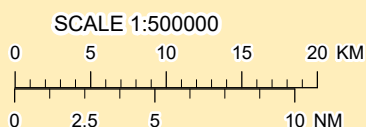
LATRI
N 47°52'17"
E 084°32'29"
FL120-FL140

LATRI 1B
After take-off climb straight ahead to 2500 or above,
but not more than 1 min 10 sec,
turn RIGHT on track 004° until intercept bearing 144° ZSN,
then proceed on track 324° to LATRI (N475217 E0843229).

min PDG 5.9%

ZAISAN
NDB 552.0
ZSN
N 47°29'06"
E 084°53'08"

CHANGE: NDB callsign, add WPT LATRI, WPT GOPSO del.



THIS PAGE INTENTIONALLY LEFT BLANK